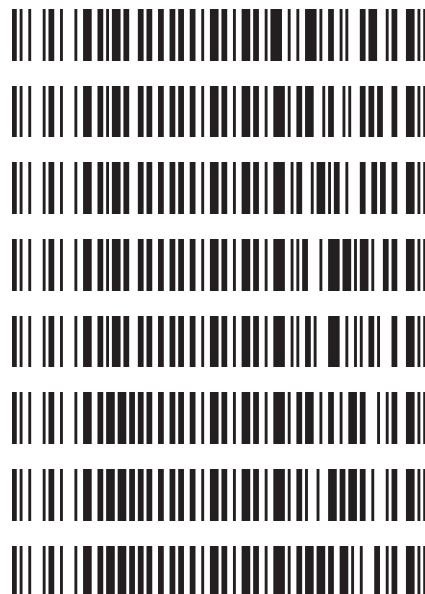


**Worklist: 1186**

| <u>LAB_CASE</u> | <u>ITEM</u> | <u>TASK_ID</u> | <u>DESCRIPTION</u>             |
|-----------------|-------------|----------------|--------------------------------|
| M2016-0363      | 4           | 60270          | 6.1.2 Blood Cannabinoids by LC |
| M2016-0860      | 3           | 60271          | 6.1.2 Blood Cannabinoids by LC |
| M2016-1807      | 1           | 60272          | 6.1.2 Blood Cannabinoids by LC |
| M2016-2043      | 1           | 60273          | 6.1.2 Blood Cannabinoids by LC |
| M2016-2067      | 2           | 60275          | 6.1.2 Blood Cannabinoids by LC |
| P2016-0309      | 1           | 60277          | 6.1.2 Blood Cannabinoids by LC |
| P2016-0388      | 1           | 60279          | 6.1.2 Blood Cannabinoids by LC |
| P2016-0524      | 1           | 60281          | 6.1.2 Blood Cannabinoids by LC |



reviewed 7/13/16

# Worklist Report

|                |  |
|----------------|--|
| Worklist Path: | C:\MassHunter\ISP Methods\worklists\CS Combined 062316.wkl |
| Date Modified: | 06/23/2016 11:35:16 AM                                     |
| Date Printed:  | 07/12/2016 03:17:34 PM                                     |

## Worklist Run Parameters

|                                   |   |
|-----------------------------------|---|
| Operator Name:                    | 62340                                       |
| Run Type:                         | Standard Start                              |
| Part of Method to Run:            | Acquisition Only                            |
| Execution for Acquisition-DA:     | Synchronous                                 |
| Acquisition Method Path:          | C:\MassHunter\ISP Methods\Acquisition       |
| DA Method Path:                   | D:\MassHunter\methods                       |
| Data File Path:                   | C:\MassHunter\Data\2016\Combined\071216 CS  |
| Pre-Worklist Script:              | ---   |
| Post-Worklist Script:             | SCP_InstrumentStandby(){MH_Acq_Scripts.exe} |
| Acquisition Clean Up Script:      | SCP_InstrumentStandby(){MH_Acq_Scripts.exe} |
| Overlapped Injection:             | No  |
| Clear sample selection after run: | Yes   |
| Wait Time for Ready(Min):         | 10  |
| Threshold Disk Value(GB):         | 10  |
| Comment:                          | ---   |


## Plate Barcode Information

| Plate | Barcode |
|-------|---------|
| P1    |         |
| P2    |         |

## Worklist Table

| Sample Position | Sample Name        | Method                               | Data File     | Sample Type | Level Name | Comment                        | Info.                               |
|-----------------|--------------------|--------------------------------------|---------------|-------------|------------|--------------------------------|-------------------------------------|
| P2-A1           | Blank              | isp blood cannabinoids Poky 2016-1.m | Blank1-r000.d | Blank       |            | AM 6.1.2 Cannabinoids by LCQQQ |                                     |
| P2-A1           | Blank              | isp blood cannabinoids Poky 2016-1.m | Blank1-r001.d | Blank       |            | AM 6.1.2 Cannabinoids by LCQQQ |                                     |
| P2-A1           | Blank              | isp blood cannabinoids Poky 2016-1.m | Blank2-r001.d | Blank       |            | AM 6.1.2 Cannabinoids by LCQQQ |                                     |
| P2-A2           | Blood: 1_5 ng/mL   | isp blood cannabinoids Poky 2016-1.m | B_CAL1-r001.d | Calibration | 1          | AM 6.1.2 Cannabinoids by LCQQQ | c-THC @5ng/mL, all others @1 ng/mL  |
| P2-A3           | Blood: 2_10 ng/mL  | isp blood cannabinoids Poky 2016-1.m | B_CAL2_r001.d | Calibration | 2          | AM 6.1.2 Cannabinoids by LCQQQ | c-THC @10ng/mL, all others @2 ng/mL |
| P2-A4           | Blood: 5_25 ng/mL  | isp blood cannabinoids Poky 2016-1.m | B_CAL3_r001.d | Calibration | 3          | AM 6.1.2 Cannabinoids by LCQQQ | c-THC @25ng/mL, all others @5 ng/mL |
| P2-A5           | Blood: 10_50 ng/mL | isp blood cannabinoids Poky 2016-1.m | B_CAL4_r001.d | Calibration | 4          | AM 6.1.2 Cannabinoids by LCQQQ | c-THC @50ng/mL, all                 |

| Sample Position | Sample Name              | Method                               | Data File                    | Sample Type | Level Name | Comment                        | Info. ☺                                |
|-----------------|--------------------------|--------------------------------------|------------------------------|-------------|------------|--------------------------------|--|
|                 |                          |                                      |                              |             |            |                                | others @10 ng/mL                       |
| P2-A6           | Blood: 25_125 ng/mL      | isp blood cannabinoids Poky 2016-1.m | B_CAL5_r001.d                | Calibration | 5          | AM 6.1.2 Cannabinoids by LCQQQ | c-THC @125ng/mL, all others @25 ng/mL  |
| P2-A7           | Blood: 50_250 ng/mL      | isp blood cannabinoids Poky 2016-1.m | B_CAL6_r001.d                | Calibration | 6          | AM 6.1.2 Cannabinoids by LCQQQ | c-THC @250ng/mL, all others @50 ng/mL  |
| P2-A8           | Blood: 100_500 ng/mL     | isp blood cannabinoids Poky 2016-1.m | B_CAL7_r001.d                | Calibration | 7          | AM 6.1.2 Cannabinoids by LCQQQ | c-THC @500ng/mL, all others @100 ng/mL |
| P2-A1           | Blank                    | isp blood cannabinoids Poky 2016-1.m | Carryover blank1_r001.d      | Blank       |            | AM 6.1.2 Cannabinoids by LCQQQ |  |
| P2-A9           | Blood Negative Control   | isp blood cannabinoids Poky 2016-1.m | B-NC-r001.d                  | Sample      |            | UTAK B1013                     | Negative Blood UTAK Lot B1013          |
| P2-B1           | Blood Positive Control 1 | isp blood cannabinoids Poky 2016-1.m | B-PC1-r001.d                 | Sample      |            | UTAK B1013 + WS060716          |  |
| P2-A1           | Blank                    | isp blood cannabinoids Poky 2016-1.m | Carryover blank2_r001.d      | Blank       |            | AM 6.1.2 Cannabinoids by LCQQQ |  |
| P2-A9           | Blank M2016-0363-4       | isp blood cannabinoids Poky 2016-1.m | M2016-0363-4_BLK_r001.d      | Blank       |            | AM 6.1.2 Cannabinoids by LCQQQ |  |
| P2-B2           | M2016-0363-4             | isp blood cannabinoids Poky 2016-1.m | M2016-0363-4-r001.d          | Sample      |            | AM 6.1.2 Cannabinoids by LCQQQ | Blood                                  |
| P2-A9           | Blank M2016-0860-3       | isp blood cannabinoids Poky 2016-1.m | M2016-0860-3_BLK_r001.d      | Blank       |            | AM 6.1.2 Cannabinoids by LCQQQ |  |
| P2-B3           | M2016-0860-3             | isp blood cannabinoids Poky 2016-1.m | M2016-0860-3-r001.d          | Sample      |            | AM 6.1.2 Cannabinoids by LCQQQ | Blood                                  |
| P2-A9           | Blank M2016-1807-1       | isp blood cannabinoids Poky 2016-1.m | M2016-1807-1_BLK_r001.d      | Blank       |            | AM 6.1.2 Cannabinoids by LCQQQ |  |
| P2-B4           | M2016-1807-1             | isp blood cannabinoids Poky 2016-1.m | M2016-1807-1-r001.d          | Sample      |            | AM 6.1.2 Cannabinoids by LCQQQ | Blood                                  |
| P2-A1           | Blank                    | isp blood cannabinoids Poky 2016-1.m | cann-Carryover blank3_r001.d | Blank       |            | AM 6.1.2 Cannabinoids by LCQQQ |  |
| P2-C3           | Blood Positive Control 2 | isp blood cannabinoids Poky 2016-1.m | cann-B-PC2-r001.d            | Sample      |            | UTAK B1013 + WS060716          |  |
| P2-A1           | Blank                    | isp blood cannabinoids Poky 2016-1.m | Carryover blank4_r001.d      | Blank       |            | AM 6.1.2 Cannabinoids by LCQQQ |  |
| P2-A9           | Blank M2016-2043-1       | isp blood cannabinoids Poky 2016-1.m | M2016-2043-1_BLK_r001.d      | Blank       |            | AM 6.1.2 Cannabinoids by LCQQQ |  |
| P2-B5           | M2016-2043-1             | isp blood cannabinoids Poky 2016-1.m | M2016-2043-1-r001.d          | Sample      |            | AM 6.1.2 Cannabinoids by LCQQQ | Blood                                  |
| P2-A9           |                          | isp blood cannabinoids Poky 2016-1.m |                              | Blank       |            |                                |  |

| Sample Position | Sample Name           | Method                               | Data File                     | Sample Type | Level Name | Comment                              | Info.  |
|-----------------|-----------------------|--------------------------------------|-------------------------------|-------------|------------|--------------------------------------|---|
|                 | Blank<br>M2016-2067-2 |                                      | M2016-2067-2_BLK_r001.d       |             |            | AM 6.1.2<br>Cannabinoids<br>by LCQQQ |   |
| P2-B6           | M2016-2067-2          | isp blood cannabinoids Poky 2016-1.m | M2016-2067-2-r001.d           | Sample      |            | AM 6.1.2<br>Cannabinoids<br>by LCQQQ | Blood   |
| P2-A9           | Blank<br>P2016-0309-1 | isp blood cannabinoids Poky 2016-1.m | P2016-0309-1_BLK_r001.d       | Blank       |            | AM 6.1.2<br>Cannabinoids<br>by LCQQQ |   |
| P2-B7           | P2016-0309-1          | isp blood cannabinoids Poky 2016-1.m | P2016-0309-1-r001.d           | Sample      |            | AM 6.1.2<br>Cannabinoids<br>by LCQQQ | Blood   |
| P2-A9           | Blank<br>P2016-0388-1 | isp blood cannabinoids Poky 2016-1.m | P2016-0388-1_BLK_r001.d       | Blank       |            | AM 6.1.2<br>Cannabinoids<br>by LCQQQ |   |
| P2-B8           | P2016-0388-1          | isp blood cannabinoids Poky 2016-1.m | P2016-0388-1-r001.d           | Sample      |            | AM 6.1.2<br>Cannabinoids<br>by LCQQQ | Blood   |
| P2-A9           | Blank<br>P2016-0524-1 | isp blood cannabinoids Poky 2016-1.m | P2016-0524-1_BLK_r001.d       | Blank       |            | AM 6.1.2<br>Cannabinoids<br>by LCQQQ |   |
| P2-B9           | P2016-0524-1          | isp blood cannabinoids Poky 2016-1.m | P2016-0524-1-r001.d           | Sample      |            | AM 6.1.2<br>Cannabinoids<br>by LCQQQ | Blood   |
| P2-A1           | Blank                 | isp blood cannabinoids Poky 2016-1.m | Blank3-r001.d                 | Blank       |            | AM 6.1.2<br>Cannabinoids<br>by LCQQQ | Blood   |
| P1-F9           | Blank                 | Benzos_Z_Drugs_ACN_FA_ISP_2016.m     | BZ-Blank1-r001.d              | Blank       |            | AM 6.1.2<br>Cannabinoids<br>by LCQQQ | Blood   |
| P1-F9           | Blank                 | Benzos_Z_Drugs_ACN_FA_ISP_2016.m     | BZ-Blank2-r001.d              | Blank       |            | AM 6.1.2<br>Cannabinoids<br>by LCQQQ | Blood   |
| P1-F8           | 5 ngmL                | Benzos_Z_Drugs_ACN_FA_ISP_2016.m     | BZ-5 ngmL-r001.d              | Calibration | 1          | AM 6.1.2<br>Cannabinoids<br>by LCQQQ | Blood   |
| P1-F7           | 10 ngmL               | Benzos_Z_Drugs_ACN_FA_ISP_2016.m     | BZ-10 ngmL-r001.d             | Calibration | 2          | AM 6.1.1<br>Benzo and Z<br>by LCQQQ  |   |
| P1-F6           | 25 ngmL               | Benzos_Z_Drugs_ACN_FA_ISP_2016.m     | BZ-25 ngmL_r001.d             | Calibration | 3          | AM 6.1.1<br>Benzo and Z<br>by LCQQQ  |   |
| P1-F5           | 50 ngmL               | Benzos_Z_Drugs_ACN_FA_ISP_2016.m     | BZ-50 ngmL_r001.d             | Calibration | 4          | AM 6.1.1<br>Benzo and Z<br>by LCQQQ  |   |
| P1-F4           | 100 ngmL              | Benzos_Z_Drugs_ACN_FA_ISP_2016.m     | BZ-100 ngmL_r001.d            | Calibration | 5          | AM 6.1.1<br>Benzo and Z<br>by LCQQQ  |   |
| P1-F3           | 500 ngmL              | Benzos_Z_Drugs_ACN_FA_ISP_2016.m     | BZ-500 ngmL_r001.d            | Calibration | 6          | AM 6.1.1<br>Benzo and Z<br>by LCQQQ  |   |
| P1-F2           | 1000 ngmL             | Benzos_Z_Drugs_ACN_FA_ISP_2016.m     | BZ-1000 ngmL_r001.d           | Calibration | 7          | AM 6.1.1<br>Benzo and Z<br>by LCQQQ  |   |
| P1-F1           | 3000 ngmL             | Benzos_Z_Drugs_ACN_FA_ISP_2016.m     | BZ-3000 ngmL_r001.d           | Calibration | 8          | AM 6.1.1<br>Benzo and Z<br>by LCQQQ  |   |
| P1-F9           | Blank                 | Benzos_Z_Drugs_ACN_FA_ISP_2016.m     | BZ-Carryover<br>blank1_r001.d | Blank       |            | AM 6.1.1<br>Benzo and Z<br>by LCQQQ  |   |
| P1-E9           |                       | Benzos_Z_Drugs_ACN_FA_ISP_2016.m     | BZ-NC-B_r001.d                | Sample      |            | UTAK B1013                           |   |

| Sample Position | Sample Name            | Method                           | Data File                              | Sample Type | Level Name | Comment                       | Info.  |
|-----------------|------------------------|----------------------------------|--|-------------|------------|-------------------------------|---|
|                 | Negative Blood Control |                                  |  |             |            |                               | UTAK Negative Whole Blood LOT B1013   |
| P1-E8           | Positive Blood Control | Benzos_Z_Drugs_ACN_FA_ISP_2016.m | BZ-PC-B-r001.d                         | Sample      |            | UTAK B1013 + WS060716         | Benzodiazepines Mix Cerilliant lot FE012413-02 in UTAK B1013                            |
| P1-E9           | Blank - C2016-0176-2   | Benzos_Z_Drugs_ACN_FA_ISP_2016.m | BZ-Carryover blank-C2016-0176-2_r001.d | Blank       |            | AM 6.1.1 Benzo and Z by LCQQQ |   |
| P1-E7           | C2016-0176-2           | Benzos_Z_Drugs_ACN_FA_ISP_2016.m | BZ-C2016-0176-2-r001.d                 | Sample      |            | AM 6.1.1 Benzo and Z by LCQQQ | Blood   |
| P1-E9           | Blank - M2016-0218-1   | Benzos_Z_Drugs_ACN_FA_ISP_2016.m | BZ-Carryover blank-M2016-0218-1_r001.d | Blank       |            | AM 6.1.1 Benzo and Z by LCQQQ |   |
| P1-E6           | M2016-0218-1           | Benzos_Z_Drugs_ACN_FA_ISP_2016.m | BZ-M2016-0218-1-r001.d                 | Sample      |            | AM 6.1.1 Benzo and Z by LCQQQ | Blood   |
| P1-E9           | Blank - M2016-0260-1   | Benzos_Z_Drugs_ACN_FA_ISP_2016.m | BZ-Carryover blank-M2016-0260-1_r001.d | Blank       |            | AM 6.1.1 Benzo and Z by LCQQQ |   |
| P1-E5           | M2016-0260-1           | Benzos_Z_Drugs_ACN_FA_ISP_2016.m | BZ-M2016-0260-1-r001.d                 | Sample      |            | AM 6.1.1 Benzo and Z by LCQQQ | Blood   |
| P1-E9           | Blank - P2016-0254-1   | Benzos_Z_Drugs_ACN_FA_ISP_2016.m | BZ-Carryover blank-P2016-0254-1_r001.d | Blank       |            | AM 6.1.1 Benzo and Z by LCQQQ |   |
| P1-E4           | P2016-0254-1           | Benzos_Z_Drugs_ACN_FA_ISP_2016.m | BZ-P2016-0254-1-r001.d                 | Sample      |            | AM 6.1.1 Benzo and Z by LCQQQ | Blood   |
| P1-E9           | Blank - P2016-0358-1   | Benzos_Z_Drugs_ACN_FA_ISP_2016.m | BZ-Carryover blank-P2016-0358-1_r001.d | Blank       |            | AM 6.1.1 Benzo and Z by LCQQQ |   |
| P1-E3           | P2016-0358-1           | Benzos_Z_Drugs_ACN_FA_ISP_2016.m | BZ-P2016-0358-1-r001.d                 | Sample      |            | AM 6.1.1 Benzo and Z by LCQQQ | Blood   |
| P1-E9           | Blank - P2016-0524-1   | Benzos_Z_Drugs_ACN_FA_ISP_2016.m | BZ-Carryover blank-P2016-0524-1_r001.d | Blank       |            | AM 6.1.1 Benzo and Z by LCQQQ |   |
| P1-E2           | P2016-0524-1           | Benzos_Z_Drugs_ACN_FA_ISP_2016.m | BZ-P2016-0524-1-r001.d                 | Sample      |            | AM 6.1.1 Benzo and Z by LCQQQ | Blood   |
| P1-E9           | Blank - P2016-0680-1   | Benzos_Z_Drugs_ACN_FA_ISP_2016.m | BZ-Carryover blank-P2016-0680-1_r001.d | Blank       |            | AM 6.1.1 Benzo and Z by LCQQQ |   |
| P1-E1           | P2016-0680-1           | Benzos_Z_Drugs_ACN_FA_ISP_2016.m | BZ-P2016-0680-1-r001.d                 | Sample      |            | AM 6.1.1 Benzo and Z by LCQQQ | Blood   |
| P1-F9           | Blank                  | Benzos_Z_Drugs_ACN_FA_ISP_2016.m | BZ-Carryover blank3_r001.d             | Blank       |            | AM 6.1.1 Benzo and Z by LCQQQ |   |

# ISP Forensics Calibration Curve Report

**Batch Data Path** C:\MassHunter\Data\2016\Combined\071216 CS\QuantResults\can712poc.batch.bin

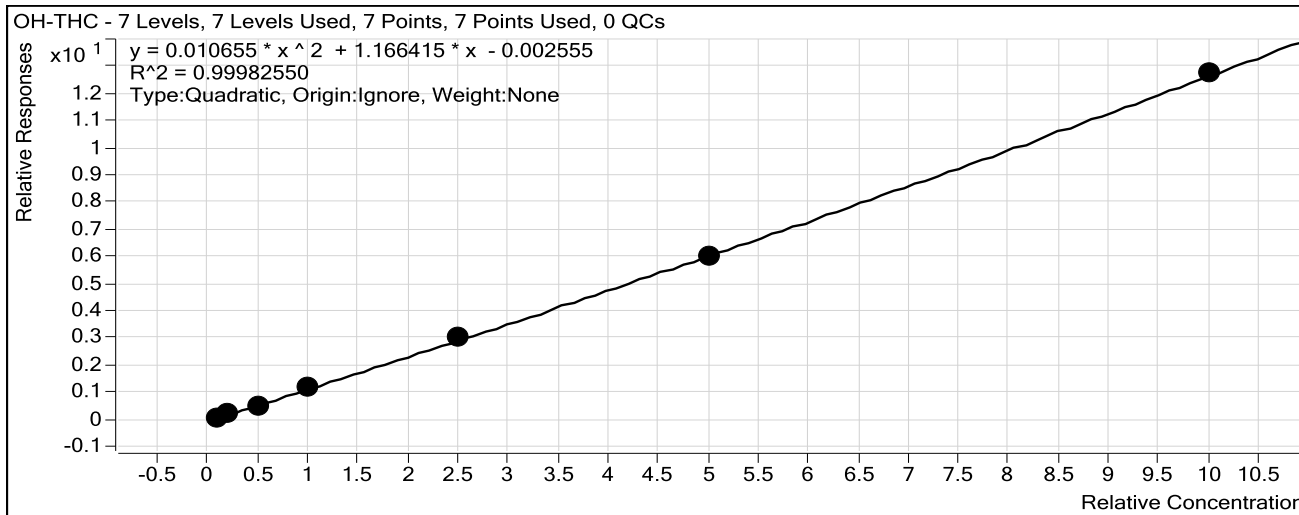
**Last Calib Update** 7/13/2016 1:37 PM

**Analyst Name**

ISP TOX

**Target Compound** *OH-THC*

**Internal Standard** *OH-THC-d3*



| Sample               | Level | Enabled                             | Exp Conc | Final Conc | Accuracy |
|----------------------|-------|-------------------------------------|----------|------------|----------|
| Blood: 1_5 ng/mL     | 1     | <input checked="" type="checkbox"/> | 1        | 0.9        | 86.3     |
| Blood: 2_10 ng/mL    | 2     | <input checked="" type="checkbox"/> | 2        | 1.8        | 89.3     |
| Blood: 5_25 ng/mL    | 3     | <input checked="" type="checkbox"/> | 5        | 4.7        | 93.1     |
| Blood: 10_50 ng/mL   | 4     | <input checked="" type="checkbox"/> | 10       | 10.4       | 104.2    |
| Blood: 25_125 ng/mL  | 5     | <input checked="" type="checkbox"/> | 25       | 25.8       | 103.3    |
| Blood: 50_250 ng/mL  | 6     | <input checked="" type="checkbox"/> | 50       | 49.3       | 98.7     |
| Blood: 100_500 ng/mL | 7     | <input checked="" type="checkbox"/> | 100      | 100.1      | 100.1    |

# ISP Forensics Calibration Curve Report

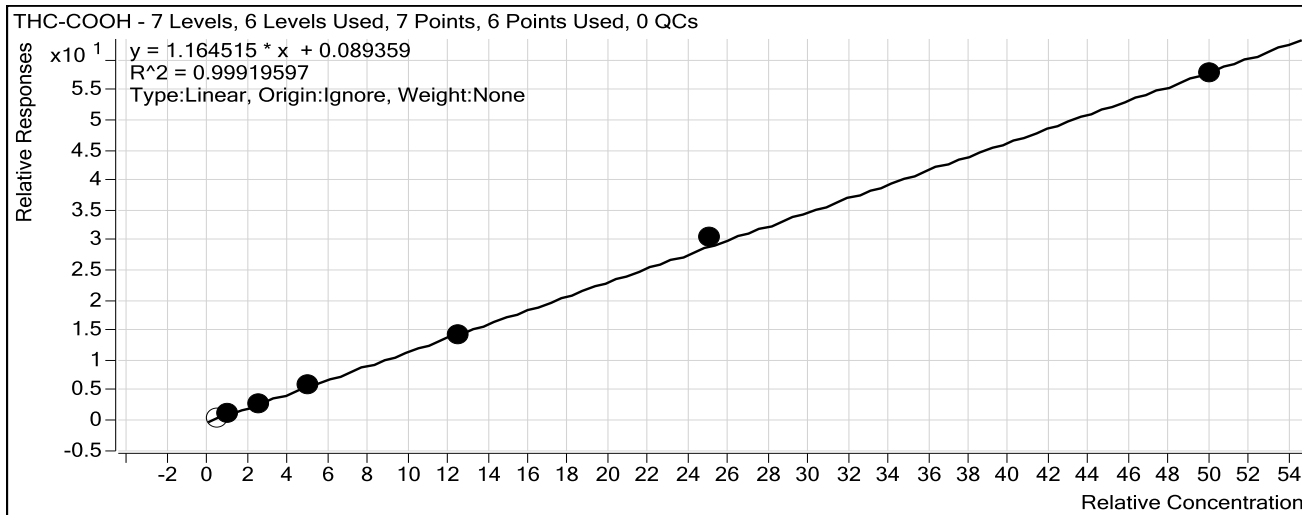
**Batch Data Path** C:\MassHunter\Data\2016\Combined\071216 CS\QuantResults\can712poc.batch.bin

**Last Calib Update** 7/13/2016 1:37 PM

**Analyst Name** ISP TOX

**Target Compound** *THC-COOH*

**Internal Standard** *THC-COOH-d3*



| Sample               | Level | Enabled                             | Exp Conc | Final Conc | Accuracy |
|----------------------|-------|-------------------------------------|----------|------------|----------|
| Blood: 1_5 ng/mL     | 1     | <input type="checkbox"/>            | 5        | 3.9        | 78.4     |
| Blood: 2_10 ng/mL    | 2     | <input checked="" type="checkbox"/> | 10       | 8.3        | 83.4     |
| Blood: 5_25 ng/mL    | 3     | <input checked="" type="checkbox"/> | 25       | 21.6       | 86.5     |
| Blood: 10_50 ng/mL   | 4     | <input checked="" type="checkbox"/> | 50       | 51.5       | 102.9    |
| Blood: 25_125 ng/mL  | 5     | <input checked="" type="checkbox"/> | 125      | 122.9      | 98.4     |
| Blood: 50_250 ng/mL  | 6     | <input checked="" type="checkbox"/> | 250      | 260.1      | 104.0    |
| Blood: 100_500 ng/mL | 7     | <input checked="" type="checkbox"/> | 500      | 495.5      | 99.1     |

# ISP Forensics Calibration Curve Report

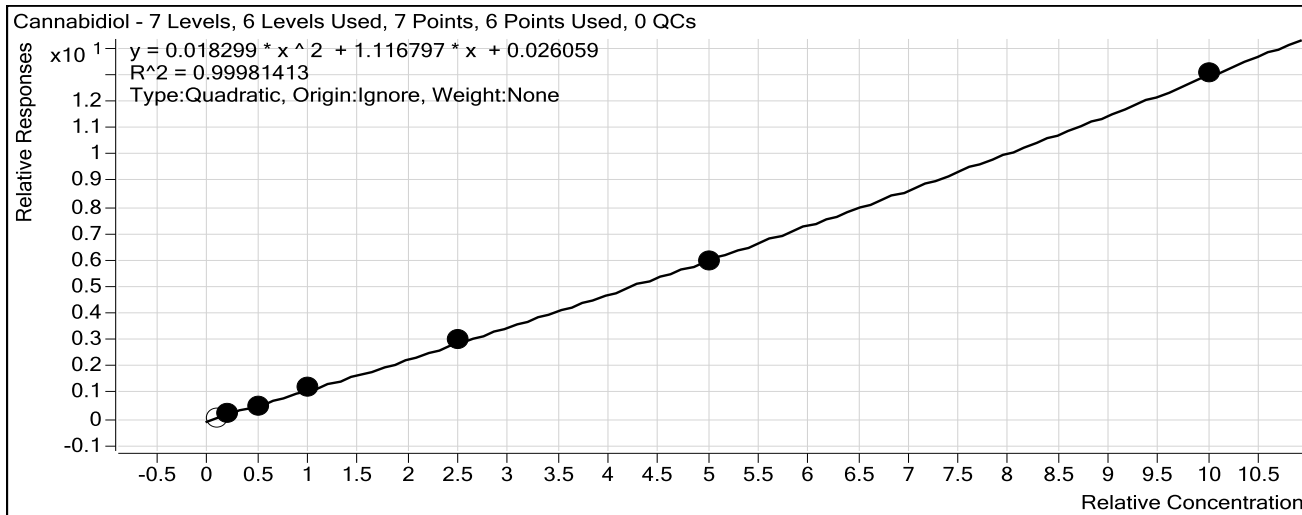
**Batch Data Path** C:\MassHunter\Data\2016\Combined\071216 CS\QuantResults\can712poc.batch.bin

**Last Calib Update** 7/13/2016 1:37 PM

**Analyst Name** ISP TOX

**Target Compound** *Cannabidiol*

**Internal Standard** *Cannabidiol-d3*



| Sample               | Level | Enabled                             | Exp Conc | Final Conc | Accuracy |
|----------------------|-------|-------------------------------------|----------|------------|----------|
| Blood: 1_5 ng/mL     | 1     | <input type="checkbox"/>            | 1        | 0.6        | 58.9     |
| Blood: 2_10 ng/mL    | 2     | <input checked="" type="checkbox"/> | 2        | 1.7        | 86.5     |
| Blood: 5_25 ng/mL    | 3     | <input checked="" type="checkbox"/> | 5        | 4.5        | 89.9     |
| Blood: 10_50 ng/mL   | 4     | <input checked="" type="checkbox"/> | 10       | 10.5       | 105.2    |
| Blood: 25_125 ng/mL  | 5     | <input checked="" type="checkbox"/> | 25       | 25.8       | 103.0    |
| Blood: 50_250 ng/mL  | 6     | <input checked="" type="checkbox"/> | 50       | 49.4       | 98.8     |
| Blood: 100_500 ng/mL | 7     | <input checked="" type="checkbox"/> | 100      | 100.1      | 100.1    |



# ISP Forensics Calibration Curve Report

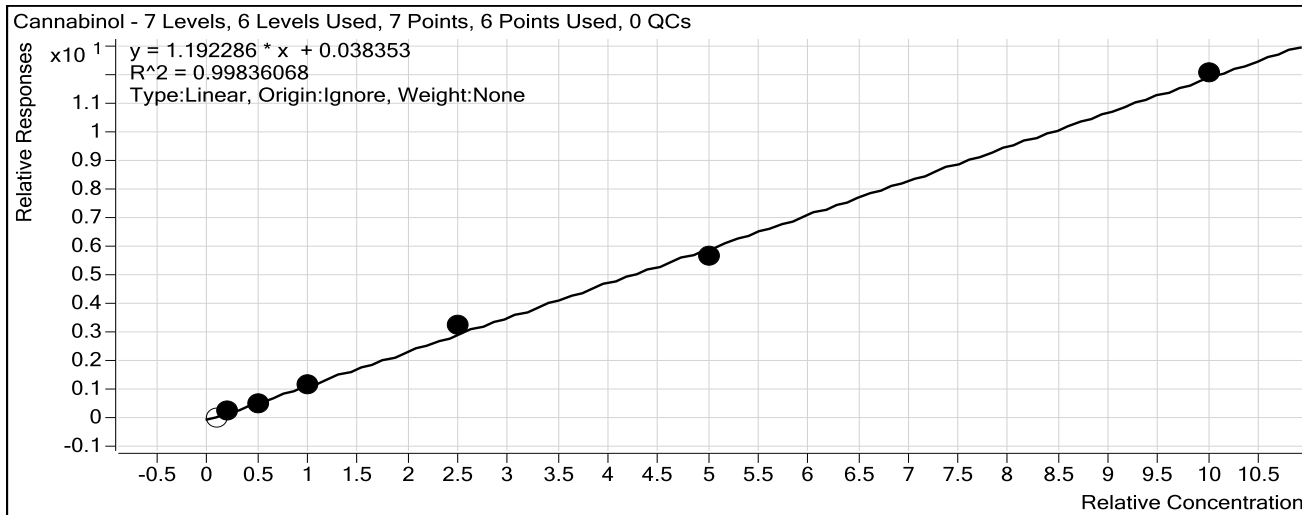
**Batch Data Path** C:\MassHunter\Data\2016\Combined\071216 CS\QuantResults\can712poc.batch.bin

**Last Calib Update** 7/13/2016 1:37 PM

**Analyst Name** ISP TOX

**Target Compound** *Cannabinol*

**Internal Standard** *Cannabinol-d3*



| Sample               | Level | Enabled                             | Exp Conc | Final Conc | Accuracy |
|----------------------|-------|-------------------------------------|----------|------------|----------|
| Blood: 1_5 ng/mL     | 1     | <input type="checkbox"/>            | 1        | 0.3        | 27.5     |
| Blood: 2_10 ng/mL    | 2     | <input checked="" type="checkbox"/> | 2        | 1.9        | 96.1     |
| Blood: 5_25 ng/mL    | 3     | <input checked="" type="checkbox"/> | 5        | 4.5        | 89.8     |
| Blood: 10_50 ng/mL   | 4     | <input checked="" type="checkbox"/> | 10       | 10.0       | 100.2    |
| Blood: 25_125 ng/mL  | 5     | <input checked="" type="checkbox"/> | 25       | 27.3       | 109.3    |
| Blood: 50_250 ng/mL  | 6     | <input checked="" type="checkbox"/> | 50       | 47.6       | 95.2     |
| Blood: 100_500 ng/mL | 7     | <input checked="" type="checkbox"/> | 100      | 100.6      | 100.6    |

# ISP Forensics Calibration Curve Report

**Batch Data Path** C:\MassHunter\Data\2016\Combined\071216 CS\QuantResults\can712poc.batch.bin

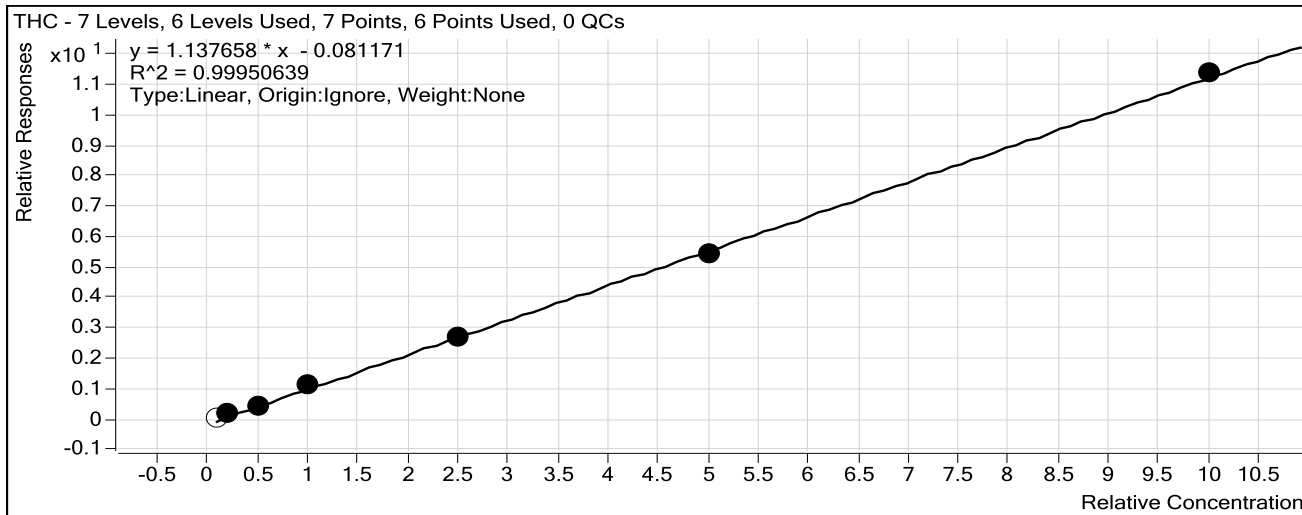
**Last Calib Update** 7/13/2016 1:37 PM

**Analyst Name**

ISP TOX

**Target Compound** *THC*

**Internal Standard** *THC-d3*



| Sample               | Level | Enabled                             | Exp Conc | Final Conc | Accuracy |
|----------------------|-------|-------------------------------------|----------|------------|----------|
| Blood: 1_5 ng/mL     | 1     | <input type="checkbox"/>            | 1        | 1.4        | 139.1    |
| Blood: 2_10 ng/mL    | 2     | <input checked="" type="checkbox"/> | 2        | 2.3        | 117.3    |
| Blood: 5_25 ng/mL    | 3     | <input checked="" type="checkbox"/> | 5        | 4.6        | 92.5     |
| Blood: 10_50 ng/mL   | 4     | <input checked="" type="checkbox"/> | 10       | 11.0       | 110.1    |
| Blood: 25_125 ng/mL  | 5     | <input checked="" type="checkbox"/> | 25       | 24.7       | 98.8     |
| Blood: 50_250 ng/mL  | 6     | <input checked="" type="checkbox"/> | 50       | 48.7       | 97.4     |
| Blood: 100_500 ng/mL | 7     | <input checked="" type="checkbox"/> | 100      | 100.6      | 100.6    |

# ISP FORENSICS

## Pocatello

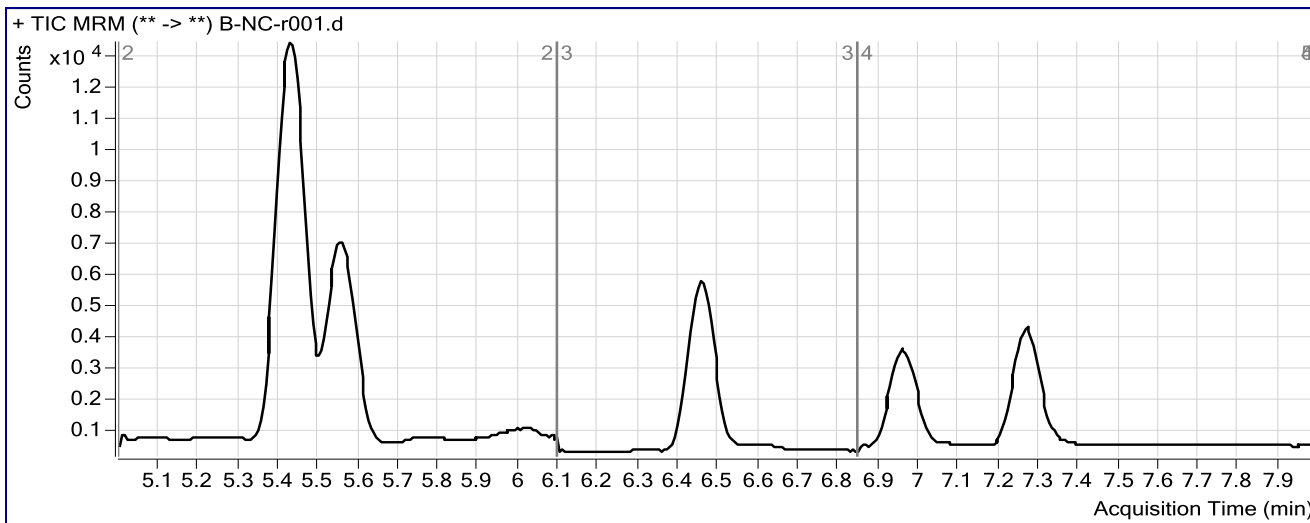
### Cannabinoid Analysis Report

|                          |   |                      |           |
|--------------------------|---|----------------------|-----------|
| <b>Batch Data Path</b>   | C:\MassHunter\Data\2016\Combined\071216 CS\QuantResults\can712poc.batch.bin |                      |           |
| <b>Analysis Time</b>     | 7/13/2016 1:37 PM   | <b>Analyst Name</b>  | ISPUser   |
| <b>Report Time</b>       | 7/13/2016 1:39 PM   | <b>Reporter Name</b> | ISPUser   |
| <b>Last Calib Update</b> | 7/13/2016 1:37 PM   | <b>Batch State</b>   | Processed |

#### Analysis Info

|                    |                  |                    |                                      |
|--------------------|------------------|--------------------|--------------------------------------|
| <b>Acq Time</b>    | 2016-07-12 16:45 | <b>Data File</b>   | B-NC-r001.d                          |
| <b>Sample Type</b> | Sample           | <b>Sample Name</b> | Blood Negative Control               |
| <b>Dilution</b>    | 1                | <b>Acq Method</b>  | isp blood cannabinoids Poky 2016-1.m |
| <b>Position</b>    | P2-A9            | <b>Sample Info</b> | Negative Blood UTAK Lot B1013        |
| <b>Inj Vol</b>     | -1               | <b>Comment</b>     | UTAK B1013                           |

#### Sample Chromatogram



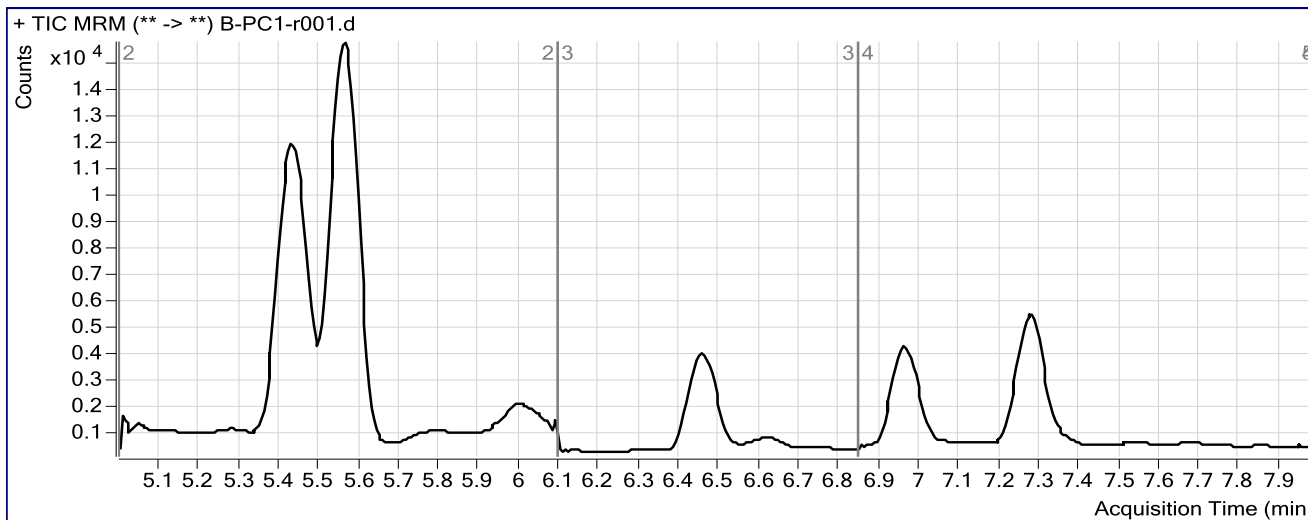
# ISP FORENSICS Pocatello Cannabinoid Analysis Report

**Batch Data Path** C:\MassHunter\Data\2016\Combined\071216 CS\QuantResults\can712poc.batch.bin  
**Analysis Time** 7/13/2016 1:37 PM **Analyst Name** ISPUser  
**Report Time** 7/13/2016 1:39 PM **Reporter Name** ISPUser  
**Last Calib Update** 7/13/2016 1:37 PM **Batch State** Processed

### Analysis Info

**Acq Time** 2016-07-12 16:59 **Data File** B-PC1-r001.d  
**Sample Type** Sample **Sample Name** Blood Positive Control 1  
**Dilution** 1 **Acq Method** isp blood cannabinoids Poky 2016-1.m  
**Position** P2-B1 **Sample Info**  
**Inj Vol** -1 **Comment** UTAK B1013 + WS060716

### Sample Chromatogram



### Results

| Compound   | ISTD Compound | RT    | Response | ISTD Resp | Resp Ratio | Final Conc |
|------------|---------------|-------|----------|-----------|------------|------------|
| THC-COOH   | THC-COOH-d3   | 5.564 | 16433    | 10148     | 1.6194     | 13.1392    |
| Cannabinol | Cannabinol-d3 | 6.967 | 4393     | 7436      | 0.5909     | 4.6341     |
| THC        | THC-d3        | 7.278 | 2783     | 8326      | 0.3343     | 3.6516     |

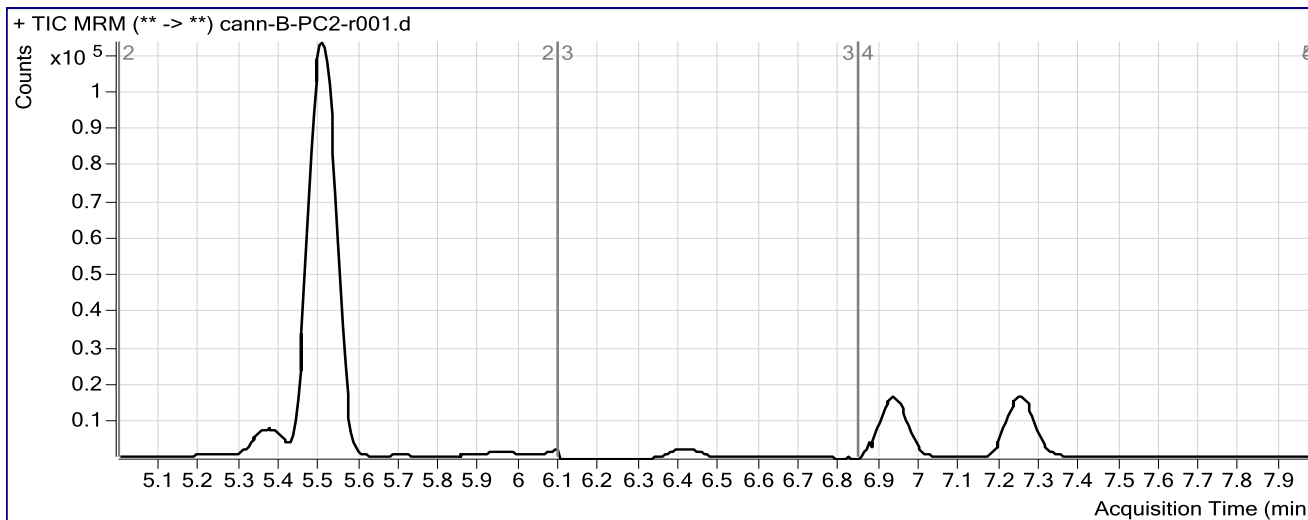
# ISP FORENSICS Pocatello Cannabinoid Analysis Report

|                          |   |                      |           |
|--------------------------|---|----------------------|-----------|
| <b>Batch Data Path</b>   | C:\MassHunter\Data\2016\Combined\071216 CS\QuantResults\can712poc.batch.bin |                      |           |
| <b>Analysis Time</b>     | 7/13/2016 1:37 PM   | <b>Analyst Name</b>  | ISPUser   |
| <b>Report Time</b>       | 7/13/2016 1:40 PM   | <b>Reporter Name</b> | ISPUser   |
| <b>Last Calib Update</b> | 7/13/2016 1:37 PM   | <b>Batch State</b>   | Processed |

**Analysis Info**

|                    |                  |                    |                                      |
|--------------------|------------------|--------------------|--------------------------------------|
| <b>Acq Time</b>    | 2016-07-13 06:55 | <b>Data File</b>   | cann-B-PC2-r001.d                    |
| <b>Sample Type</b> | Sample           | <b>Sample Name</b> | Blood Positive Control 2             |
| <b>Dilution</b>    | 1                | <b>Acq Method</b>  | isp blood cannabinoids Poky 2016-1.m |
| <b>Position</b>    | P2-C3            | <b>Sample Info</b> |                                      |
| <b>Inj Vol</b>     | -1               | <b>Comment</b>     | UTAK B1013 + WS060716                |

**Sample Chromatogram**



**Results**

| Compound    | ISTD Compound  | RT    | Response | ISTD Resp | Resp Ratio | Final Conc |
|-------------|----------------|-------|----------|-----------|------------|------------|
| THC-COOH    | THC-COOH-d3    | 5.508 | 197942   | 6763      | 29.2678    | 250.5633   |
| Cannabidiol | Cannabidiol-d3 | 6.422 | 78       | 5360      | 0.0145     | 0.0000     |
| Cannabinol  | Cannabinol-d3  | 6.933 | 48753    | 6359      | 7.6664     | 63.9784    |
| THC         | THC-d3         | 7.250 | 27959    | 5054      | 5.5315     | 49.3357    |